



---

## Microbial Analysis of The Gut of *Eisenia foetida*.

---

---

<sup>1</sup>Vishnu Ganesh

<sup>2</sup>Ismail M. Ali

---

---

<sup>1</sup>M.Sc in Microbiology  
Scott Christain College

<sup>2</sup>M.Sc in Microbiology  
Ramnarain Ruia College

---



---

Corresponding author:  
[Vishnu619@gmail.com](mailto:Vishnu619@gmail.com)

---

Received: November 21, 2021

Revised: December 22, 2021

Published: December 31, 2021

---

### ABSTRACT

*Eisenia foetida* possesses an immense bacterial diversity within their digestive tracts and is very little explored mainly because of the non-cultivable character of a large quantity of microorganisms which mainly come from soil. All these organisms establish relationships among themselves in highly varied and complex ways which contribute to soil characteristics because of their role in the modification of solid, liquid and gaseous stages.

The aim of this study was, therefore, to screen the microbiology in the gut of *Eisenia foetida* which are used in management of biowaste

It can be concluded from this study that the composting ability of *Eisenia foetida* is enhanced by the microbial activities in the gut and can be used in the management of number of organic waste generated in agriculture, horticulture, rural industries including household section creating environmental population and problem.

---

**Keywords-** *Eisenia foetida*, Vermicomposting, Biowaste Earthworms.

---

## INTRODUCTION

Vermicomposting is the process by which earthworms are used to convert organic materials, usually wastes, into a vermicompost. Vermicomposting is a non-thermophilic biological oxidation process in which organic materials are converted into vermicompost which is a peat like material, exhibiting high porosity, aeration, drainage, water holding capacity and rich microbial activities, through the interactions between earthworms and associated microbes <sup>[1]</sup>. Vermiculture is a cost-effective tool for environmentally sound waste management <sup>[3]</sup>. Earthworms such as *Eisenia foetida* play an important role in carbon turnover, soil formation, participates in cellulose degradation and humus accumulation. They actively profoundly affect the physical, chemical and biological properties of soil. Earthworms (such as *Eisenia foetida*) intestine's contains a wide range of microorganisms, enzymes and hormones which aid in rapid decomposition of half-digested material transforming them into vermicompost in a short time (nearly 4-8 weeks) <sup>[22]</sup> compared to traditional composting process which takes the advantage of microbes alone and thereby requires a prolonged period (nearly 20 weeks) for compost production. <sup>[20]</sup> Earthworms are classified into epigeic, anecic and endogeic species based on definite ecological and trophic functions. Epigeic earthworms are smaller in size, with uniformly pigmented body, short life cycle, high reproduction rate and regeneration. They dwell in superficial soil surface within litters, feeds on surface litter and mineralize them. They contain an active gizzard which aids in rapid conversion of organic matter into

vermicompost's. Epigeic earthworm includes *Eisenia fetida*, *Lumbricus rubellus*, *Bimastus minusculus*, *Dendrodrilus rubidus*, etc. Endogeic earthworms are small to large sized worms, with weakly pigmented body, life cycle of medium duration, moderately tolerant to disturbance, forms extensive horizontal burrows and they are geophagous feeding on particulate organic matter and soil. They can efficiently utilize energy from poor soils, hence can be used for soil improvements. Endogeics include *Aporrectodea caliginosa*, *Octolasion cyaneum*, *Dontoscolex corethrurus*, etc. Aneceic earthworms are larger dorsally pigmented worms with low reproductive rate, sensitive to disturbance, nocturnal, phytogeophagous, bury the surface litter, forms middens and extensive deep, permanent vertical burrows and live in them. *Lumbricus terrestris*, *Lumbricus polyphemus* and *Aporrectodea longa* are examples of anececic earthworms.<sup>[16]</sup> Epigeics and anececics are harnessed largely for vermicomposting <sup>[3]</sup>. Epigeics have been used in converting organic wastes into vermicompost. Earthworms thus act as natural bioreactors, altering the nature of the organic waste by fragmenting them.<sup>[21][24]</sup>

Earthworm's gut is a straight tube starting from mouth followed by a muscular pharynx, oesophagus, thin walled crop, muscular gizzard, foregut, midgut, hindgut, associated digestive glands and ending with anus. The gut is an effective tubular bioreactor, which maintains a stable temperature regulatory mechanism, thus accelerating the rates of the bioprocess and preventing enzyme inactivation caused by high temperatures.

The gut consisted of mucus containing protein and polysaccharides, organic and mineral matters, amino acids and microbial symbionts viz., bacteria, protozoa and micro-fungi. The increased organic carbon, total organic carbon and nitrogen moisture content in the earthworm gut provide an optimal environment for the activation of dormant microbes and germination of endospores, etc. A wide array of digestive enzymes such as amylase, cellulase, protease, lipase, chitinase and urease were reported from earthworm's alimentary canal.

Enzyme activity in earthworms is regionally specialized and influenced by physiological state, age and microorganisms. Digestive enzymes like cellulase, xylanase, acid phosphatase and alkaline phosphates were found to be more in the gut of *Eisenia fetida* as compared to other earthworms. Amylase, cellulase, acid phosphatase, alkaline phosphates and nitrate reductase were secreted in the gut of the earthworms due to increase in presence of microorganisms in it. Amylase, cellulase, xylanase, endoglucanase, cellobiase, acid phosphatase, alkaline phosphate and nitrate reductase produced jointly by earthworms and gut microflora are supposed to play a central role in the process of digestion and humification of soil organic matter. Amylase, cellulase, xylanase, endoglucanase and cellobiase act upon the complex biomolecules such as starch, cellulose, xylan and cellodextrins. Acid phosphatase and alkaline phosphates and nitrate reductase are involved in the metabolism of phosphates and nitrogen. The gut microbes were found to be responsible for cellulose and mannose activities. [21] As the organic matter passes through the gizzard of the earthworm it is

grounded into a fine powder after which the digestive enzymes, microorganisms and other fermenting substances act on them further aiding their breakdown within the gut, and finally passes out in the form of "casts" which are later acted upon by earthworm gut associated microbes converting them into manure product, the "vermicompost". [11] When the organic matter passes through the gut of the earthworm, it gets mixed up with the digestive enzymes and finally leaves the gut in partially digested form as "casts" after which the microbes takes up the process of decomposition contributing to the maturation phase. [17] The gut of the earthworm constitutes a unique microenvironment in soils. The selective digestion of microbes in the gut influences the type of nutrients that are available for subsequent assimilation by both the earthworm and members of the gut microflora. The variation in the microbial population in the earthworm's gut maybe because of their nutritional needs and digesting ability of the earthworms. The bacteria in the foregut helps to digest the food particles, actinomycetes in the midgut helps to destroy the pathogens by antagonistic activity and the fungi helps to bind the waste particles as casting in the hindgut. We look forward to work on the types of microbes present in the gut and the enzymes produced by them extracellularly that in turn helps in the digestion of the waste products into valuable castings or vermicompost.

## EXPERIMENTAL METHODS

### 2.1. Collection of Earthworms:

The specimens selected for the present investigation were the adult earthworms namely *Eisenia foetida*. The worms were

collected from Koonpura- The house of mushrooms, Trivandrum and from Vivekananda centre, Kanyakumari. Species identification was confirmed using

the general characters of the worms presented in Result section 3.1, table 1 and the taxonomical classification is presented in Results section 3.1 table 2.

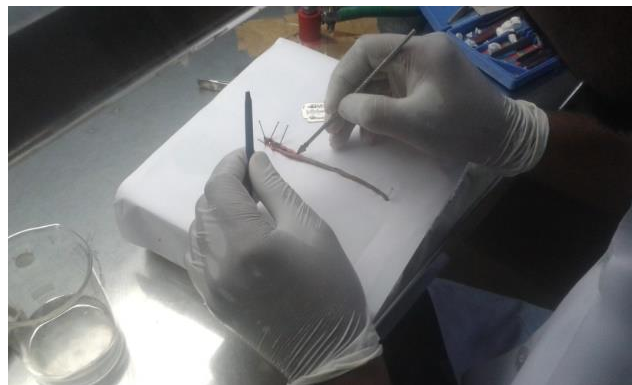


**Figure 1 – *Eisenia foetida***

## 2.2 Dissection of *Eisenia foetida*.

Healthy adults from each type were collected and allowed to starve for 24 hours. They were then disinfected with 50% ethanol. A sterile surgical blade was used for dissection. Bell pins was inserted into the ventral surface of the clitellar region and with the body slightly raised

up. With the sterile surgical blade an incision was made longitudinally along the worm. The gut was then freed from the surrounding blood vessels. With a flamed forceps the gut section was removed. This was then transferred to saline solution (0.85% NaCl solution) and homogenized for 5 minutes in a vortex. This serves as the samples for further analysis.



**Figure 2 – Dissecting of earthworm**

### 2.3 Microbial analysis of the gut of *Eisenia foetida*

The gut isolated from *Eisenia foetida* was further tested for the number of total heterotrophic and fungi. The biochemical identification of the microbes observed

**Table 1- General Characteristic's**

Features	<i>Eisenia foetida</i>
Size	27 to 130mm × 2-6 mm
Segments	Around 100
Colour	Banded appearance; deep purple; intersegmental grooves without pigmentation
Behaviour	Very active; ejects yellow coelomic fluid with pungent odour
Prostomium	Open epilobous
Setae	Lumbricine; closely paired
Clitellum	Saddle-shaped; extends over six to eight segments; variable located in segments 24-34
Spermathecal pores	Two pairs in intersegmental grooves, 9/10 and 10/11
Intersegmental septa	None thickened in 14-18; incomplete ventrally

### 3.2 Results for the number of heterotrophic bacteria.

during the enumeration of heterotrophic counts were also performed.

## RESULTS

### 3.1 Physical and Taxonomical classification of *Eisenia foetida*

Male pores	In segment 15 in raised tumescences
Female pores	As minute pores in segment 14
Genital markings	Tuberculapubertatis present as solid ridges
Spermathecae	Usually in segments 28-30. Two pairs in segments 9 and 10
Nephridia	Holoic with digitiform bladders
Cocoons	Lemon shaped

**Table 2. Taxonomical classification of *Eisenia foetida***

Kingdom	Animalia
Phylum	Annelida
Class	Oligochaeta
Subclass	Clitella
Order	Haplotaxia
Family	Lumbricodia
Genus	<i>Eisenia</i>
Species	<i>E.foetida</i>

In nutrient agar plates colony count was determined and the colony count (CFU/ml) found is tabulated in Table 3 below.

**Table 3 – Heterotrophic plate counts**

Dilution Factor	Number of Colonies (CFU/ml)		
	Original	Duplicate	Average
10 <sup>-4</sup>	205	196	200.5
10 <sup>-5</sup>	89	84	86.5
10 <sup>-6</sup>	51	48	49.5

**3.3 Results for the number of fungi.**

The fungal count was determined by spread plate technique onto Rose Bengal

agar plates. The colony count is tabulated in the table 4 below.

**Table 4 – Fungi Counts**

Dilution Factor	Number of Colonies (CFU/ml)		
	Original	Duplicate	Average
10 <sup>-4</sup>	185	174	179.5
10 <sup>-5</sup>	33	38	35.5
10 <sup>-6</sup>	18	21	19.5

**3.4 Identification of heterotrophic bacteria.**

The bacterial isolates were identified by various morphological and biochemical

characterizations and the results are presented in Table 5.

**Table 5 - Results for biochemical identification**

Identification tests	FB <sub>1</sub>	FB <sub>2</sub>
Gram staining	Gram negative rods	Gram negative rods
Motility	Non motile	Non motile
Indole test	negative	negative
Methyl red test	positive	positive
Voges proskauer test	negative	negative

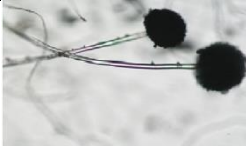
Citrate utilization test	positive	positive
Triple Sugar Iron agar test	Acid slant acid butt	Acid slant acid butt
Catalase test	positive	positive
Oxidase test	positive	positive
Starch hydrolysis test	negative	negative

mounting technique and by colony morphology and results are presented in table 6

### 3.5 Identification of fungi

The fungal isolates were identified by microscopic examination by LCB

**Table 6 – Results for fungi isolates**

Isolate	Colony morphology	Microscopic examination by LCB mounting technique
FF <sub>1</sub>	Grey color colony	

## DISCUSSION

In the present study, the microbial analysis of the gut of *Eisenia foetida*, was studied. The worms' gut was dissected and screened for the microbial analysis. The vermicomposting ability of the worm is enhanced by the gut microbes.

Earthworms possess an immense bacterial diversity within their digestive tracts and is very little explored mainly because of the non-cultivable character of a large quantity of microorganisms which mainly come from soil. Earthworm activity engineers the soil by forming extensive burrows which loosen the soil and makes it porous. Earthworm feeding reduces the survival of plant pathogens such as *Fusarium* sp. and *Verticillium*

*dahliae* and increases the densities of antagonistic fluorescent pseudomonads and filamentous actinomycetes while population density of *Bacilli* and *Trichoderma* spp. remains unaltered. [14] The gut microbes of earthworm were found to be responsible for the cellulase and mannose activities. [21]

In the present study Heterotropic bacteria namely *Klebsiella* sp were identified in the gut of *Eisenia foetida* by Morphological and biochemical characterizations. Among the two isolates all showed same biochemical results and was found to be *Klebsiella* sp. The bacteria namely *Pseudomonas* sp, *Enterobacter* sp, *Bacillus* sp, *Klebsiella* sp, were found significantly in the gut of earthworm

*Eisenia foetida*.<sup>[30]</sup> In the present study fungal isolate obtained from the gut of *Eisenia foetida* was identified by morphological examination. It was identified as *Mucor* sp.

Thus the microorganisms present in the gut of earthworms are the major cause for casting. These organisms produce enzymes which are responsible for the breakdown of the waste products into valuable casting or vermicompost.

## CONCLUSION

In the present study *Eisenia foetida* was collected for the microbial analysis of their gut microflora. It was concluded that the earthworm composting ability is enhanced by the microbial activities in the gut. The earthworms can be used in the management of number of organic waste generated in agriculture, horticulture, rural industries including household section creating environmental population and problem.

Vermicomposting seems to be a natural tool for waste management since it convert the waste into wealth in form of compost and the environmental population will be mitigated. Thus the way of management of organic waste seems to be vermicomposting technique. Vermicomposting is an efficient eco-friendly method of waste management.

## REFERENCES

1. Arancon NQ, Edwards CA, Lee S. Proceedings Brighton Crop Protection Conference – Pests and Diseases. 2002. Management of plant parasitic nematode populations by use of vermicomposts; pp. 705–716.

2. Arancon NQ, Edwards CA, Atiyeh R, Metzger JD. Effects of vermicomposts produced from food waste on the growth and yields of greenhouse peppers. *Bioresour Technol*. 2004;93:139–144.
3. Asha A, Tripathi AK, Soni P. Vermicomposting: A Better Option for Organic Solid Waste Management. *J Hum Ecol*. 2008;24:59–64.
4. Atiyeh RM, Dominguez J, Subler S, Edwards CA. Changes in biochemical properties of cow manure during processing by earthworms (*Eisenia andrei*, Bouché) and the effects on seedling growth. *Pedobiologia*. 2000;44:709–724.
5. Breidenbach J. (2002). Normalanatomie und histologie des Lumbriciden *Lumbricus terrestris* L. (Annelida, Oligochaeta). PhD Thesis, University of Muenster: Germany, pp 253.
6. Briones MJI, Garnett MH, Pearce TG. (2005). Earthworm ecological groupings based on <sup>14</sup>C analysis. *Soil Biol Biochem* 37: 2145–2149.
7. Brown GG, Barois I, Lavelle P. Regulation of soil organic matter dynamics and microbial activity in the drilosphere and the role of interactions with other edaphic functional domains. *Eur J Soil Biol*. 2000;36:177–198.
8. Brown GG, Doube BM. (2004). Functional interactions between earthworms, microorganisms, organic matter, and plants. In: Edwards CA (ed). *Earthworm Ecology*. CRC Press LLC: Boca Raton, FL, pp 213–239.
9. Curry, J.P. and O. Schmidt, 2007. The feeding ecology of earthworms—a review. *Pedobiologia*, 50: 463-477.
10. Desjardins, T., F. Charpentier, B. Pashanasi, A. Pando-Bahuon, P. Lavelle and Mariotti, 2003. Effects of earthworm



inoculation on soil organic matter dynamics of cultivated ultisol. *Pedobiologia*, 47: 835-841.

11. Dominguez J, Edwards CA. Vermicomposting organic wastes: A review. In: Shakir Hanna SH, Mikhail WZA, editors. *Soil Zoology for sustainable Development in the 21st century*. 2004. pp. 369–395.
  12. Drake HL, Horn MA. (2007). As the worm turns: the earthworm gut as a transient habitat for soil microbial biomes. *Annu Rev Microbiol* 61: 169–189.
  13. Egert M, Marhan S, Wagner B, Scheu S, Friedrich MW. (2004). Molecular profiling of 16S rRNA genes reveals diet-related differences of microbial communities in soil, gut and casts of *Lumbricus terrestris* L. (Oligochaeta: Lumbricidae). *FEMS Microb Ecol* 48: 187–197.
  14. Elmer WH. Influence of earthworm activity on soil microbes and soilborne diseases of vegetables. *Plant Dis*. 2009;93:175–179.
  15. Hyun-Jung, K., S. Kwang-Hee, C.H. Chang-Jun and H. Hor-Gil, 2004. Analysis of aerobic and culturable bacterial community structures in earthworm (*Eisenia fetida*) intestine. *Agric. Chem. Biotechnol.*, 47: 137-142.
  16. Kooch Y, Jalilvand H. Earthworm as ecosystem engineers and the most important detritivors in forest soils. *Pak J Boil Sci*. 2008;11:819–825.
  17. Lazcano C, Gomez-Brandon M, Dominguez J. Comparison of the effectiveness of composting and vermicomposting for the biological stabilization of cattle manure. *Chemosphere*. 2008;72:1013–1019.
  18. Martínez-Romero, E., 2001. Poblaciones de Rhizobia nativas de México. *Acta Zool. Mex. (n.s.) Número Especial.*, 1: 29-38.
  19. Mendez, R., S. Borges and C. Betancourt, 2003. A microscopical view of the intestine of *Onychochaeta borincana* (Oligochaeta: Glossoscolecidae). *Pedobiologia*, 47: 900-903.
  20. Moran NA. (2006). Symbiosis. *Curr Biol* 16: R867–R871.
  21. Munnoli PM, Da Silva JAT, Saroj B. Dynamic soil, dynamic plant. 2010. Dynamics of the soil- earthworm-plant relationship: a review; pp. 1–21.
  22. Navallemma KP, Wani SP, Stephane L, Padmaja VV, Vineela C, Babu Rao M, Sahrawat KL. Vermicomposting: Recycling wastes into valuable organic fertilizer. Global Theme on Agrecosystems Report no.8. Patancheru 502324. Andhra Pradesh: International Crops Research Institute for the Semi-Arid Tropics; 2004. p. 20.
  23. Parthasarathi k, Ranganathan L S, Anandi V and Zeyer J (2007). Digestion of microflora in the gut of casts of tropical composting earthworms reared on different substrates. *Journal of Environmental Biology*, 28(1) 87-97.
  24. Sánchez-Monedero MA, Roig A, Paredes C, Bernal MP. Nitrogen transformation during organic waste composting by the Rutgers system and its effects on pH, EC and maturity of the composting mixtures. *Bioresour Technol*. 2001;78:301–308
- Singleton DR, Hendrix PF, Coleman DC, Whitman WB. Identification of uncultured bacteria tightly associated with the intestine of the earthworm

- Lumbricus rubellus (Lumbricidae; Oligochaeta) Soil Biol Biochem. 2003;35:1547–1555
25. Sinha RK, Heart S, Agarwal S, Asadi R, Carretero E. Vermiculture technology for environmental management: study of the action of the earthworms *Eisenia foetida*, *Eudrilus euginae* and *Perionyx excavatus* on biodegradation of some community wastes in India and Australia. *The Environmentalist*. 2002;22:261–268.
26. Sinha RK, Bharambe G, Chaudhari U. Sewage treatment by vermifiltration with synchronous treatment of sludge by earthworms: a low-cost sustainable technology over conventional systems with potential for decentralization. *The Environmentalist*. 2008;28:409–420
27. Sinha RK, Agarwal S, Chauhan K, Valani D. The wonders of earthworms and its vermicompost in farm production: Charles Darwin's 'friends of farmers', with potential to replace destructive chemical fertilizers from agriculture. *Agricultural sciences*. 2010;1:76–94.
28. Toyota K, Kimura M. Microbial community indigenous to the earthworm *Eisenia foetida*. *Biol Fertil Soils*. 2000;31:187–190.
29. Uma Maheswari N, Sudha S. 2013. Enumeration and detection of phosphate solubilising bacteria from the gut of the gut of earthworm varieties. *Journey of chemical and pharmaceutical research*, 5(4): 264-267.
30. Verma K, Agrawal N, Farooq M, Misra RB, Hans RK. (2006). Endosulfan degradation by a *Rhodococcus* strain isolated from earthworm gut. *Ecotoxicol Environ Safety* 64: 377– 381.
31. Young, J.M., L.D. Kuykendall, E. Martinez-Romero, A. Kerr and H. Sawada, 2001. A revision of *Rhizobium* Frank 1889, with an emended description of the genus and the inclusion of all species of *Agrobacterium* Conn 1942 and *Allorhizobium undica* de Lajudie et al., 1998 as new combinations: *Rhizobium radiobacter*, *R. rhizogenes*, *R. Rubi*, *R. undicola* and *R. vitis*. *Int. J. Syst. Evol. Microbiol.*, 51: 89-103.
32. Zhang BG, Li GT, Shen TS, Wang JK, Sun Z. Changes in microbial biomass C, N, and P and enzyme activities in soil incubated with the earthworms *Metaphire guillelmi* or *Eisenia foetida*. *Soil Biol Biochem*. 2000;32:2055–2062.
- Zientz E, Dandekar T, Gross R.. (2004). Metabolic interdependence of obligate intracellular bacteria and their insect hosts. *Microbiol Mol Biol Rev*68: 745–770.